



TECHNICAL SPECIFICATIONS *Big Venue & Club*



Address : EPCC L'AUTRE CANAL
Scène de Musiques Actuelles
45, bd d'Austrasie 54000 NANCY - FRANCE

C/O:

Technical manager: Benoit FABRY - dirtech@lautrecanalnancy.fr
Tel : 03 83 38 44 83

Stage Manager – Lightman: Julien DENIS - regie@lautrecanalnancy.fr
Tel : 03 83 38 44 90

Soundman: Sébastien FETET - regieson@lautrecanalnancy.fr
Tel : 03 83 38 44 88 poste 475

Technical Mobile phone: 06 87 62 71 85

August 2017 Update

Theater

- Venue dimension: 34 m long x 21 m wide x 8 m high (see plot on p4)
- Max capacity: 1293 standing places (if tier's out :1222 places with 100 seats included)
- Capacity limited to 700 standing places possible (in stalls area : from stage to the back of FOH)
- Seating places capacity: 400 seats (300 at stalls & 100 on tier)

Stage

- Stage dimension: 17 m wide x 11 m long x 1,20 m high
- Box masked stage (11m wide x 10 long) but parrallel legs possible on request
- Marleys available
- Grill in 500 Stacco triangular truss rigged on 6 x 1 ton motors – Clearance : 5,70 m
- Access to stage by stairs upstage left and a ramp upstage right

FOH

- MIDAS PRO2 Digital desk + DL251 48 in/16out preamps (
- 1 Laptop provided with R1 (software for remote control of d&b FOH system)
- dualcore RJ45 cat5 + analogic multicore + splitter 48 in + 24 out
- 1 CD player
- 1 Tascam CD-RW 2000 writer

FOH Sound System

- 8 d&b Qi1 cabinets
- 2 d&b Qi10 front fills
- 12 d&b QiSUB bass cabinets (in CSA cardio mode)
- 2 d&b B2 sub bass cabinets
- 7 d&b D12 amps
- DATEQ SPL5 limiter (**french max in house level admitted = 102 dB**)

Foldback

- 1 YAMAHA PM5D RA Digital desk + 6x8 Yamaha AD8HR preamps (RH model equivalent) – 48 mono channels / 4 stereo channels
- 1 Ethersound Auvitran AVB32ES kit + AVB16IN/16OUT
- dualcore RJ45 cat5 + analogic multicore + splitter 48 in + 24 out
- 3 patch boxes 1/24 and 3 patch boxes 25/48

Monitors

- 10 d&b MAX15 wedges (16 available if no show in the Club the same day of yours)
- 5 amplis Crown CTS2000 (8 available on 16 channels if no show in the Club the same day of yours)
- 2 d&b Qi7 sides + 1 d&b D12 amp

Sound Power +

- 1 X P17 32A three-phase socket upstage left
- 1 X 10 m P17 cable 32A three-phase
- 1 power strips of 3 P17 32A single-phase sockets

Lights desks

- 1 moving light desk Ma Lighting Grand Ma II Light
- 1 conventionnal light desk Ma Lighting Lightcommander 48/96
- 3 ADB EURODIM dimmers providing 96 channels of 3 kW

Lights

- 8 Martin MAC QUANTUM Wash
- 8 Martin MAC QUANTUM Spot
- 48 1kW black PAR64 (CP60/61/62)
- 5 pairs of ACL bars, also individually usable
- 6 ADB DW105 1 kW (15/38°, close to a JULIAT 614SX) profiles
- 6 ADB DS205 2 kW (15/36°, close to a JULIAT 714SX) profiles
- 16 ADB C101 1 kW PC
- 8 ADB C201 2 kW (5/65°) PC
- 5 CLAY PAKY stormy DMX stroboscopes
- 1 Juliat Manon 1200 W HMI follow spot
- 8 FL1300 blinders
- MDG Max 3000 hazer and a AF-1 fan DMX remote controlled

Light Power +

- 1 X three-phase P17 63A socket upstage left
- 1 X three-phase P17 63A 20m cable (for a possible upstage right electric distribution)
- 1 X three-phase P17 32A socket up on the walkway in the back of the venue
- 1 X three-phase P17 32A 30m cable (for a possible upstage left electric distribution)

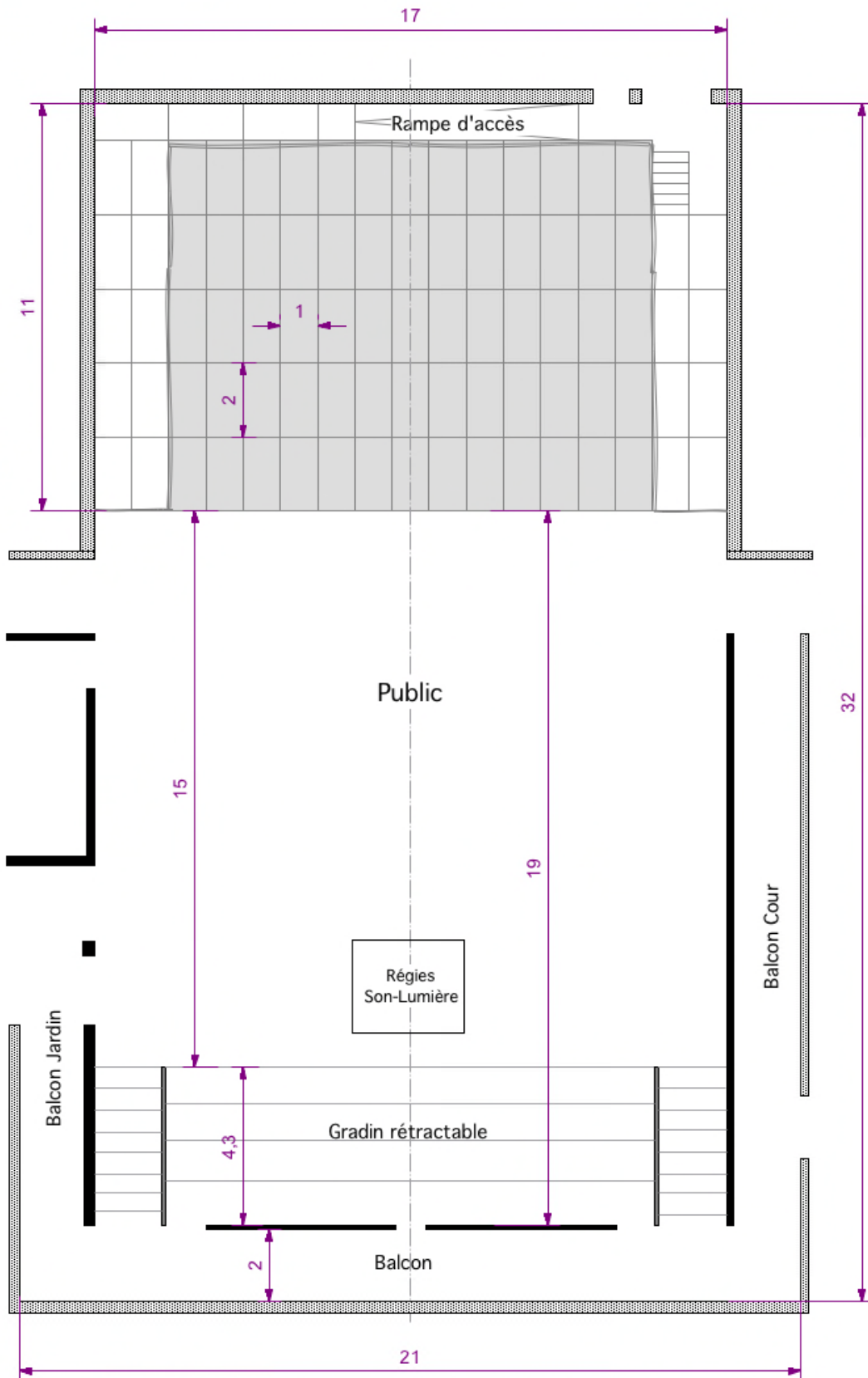
IMPORTANT NOTES

- **The only decoration sets (backdrops included) granted on L'Autre Canal stages must be classified B-s2, d0 in European Reaction to Fire Classification system or equivalent. You will be asked for documents that prove it.**
- **Any request for any other technical equipment not listed above will be charged.**

For sound and light items shared between the Big Venue and the Club, please see on p.12

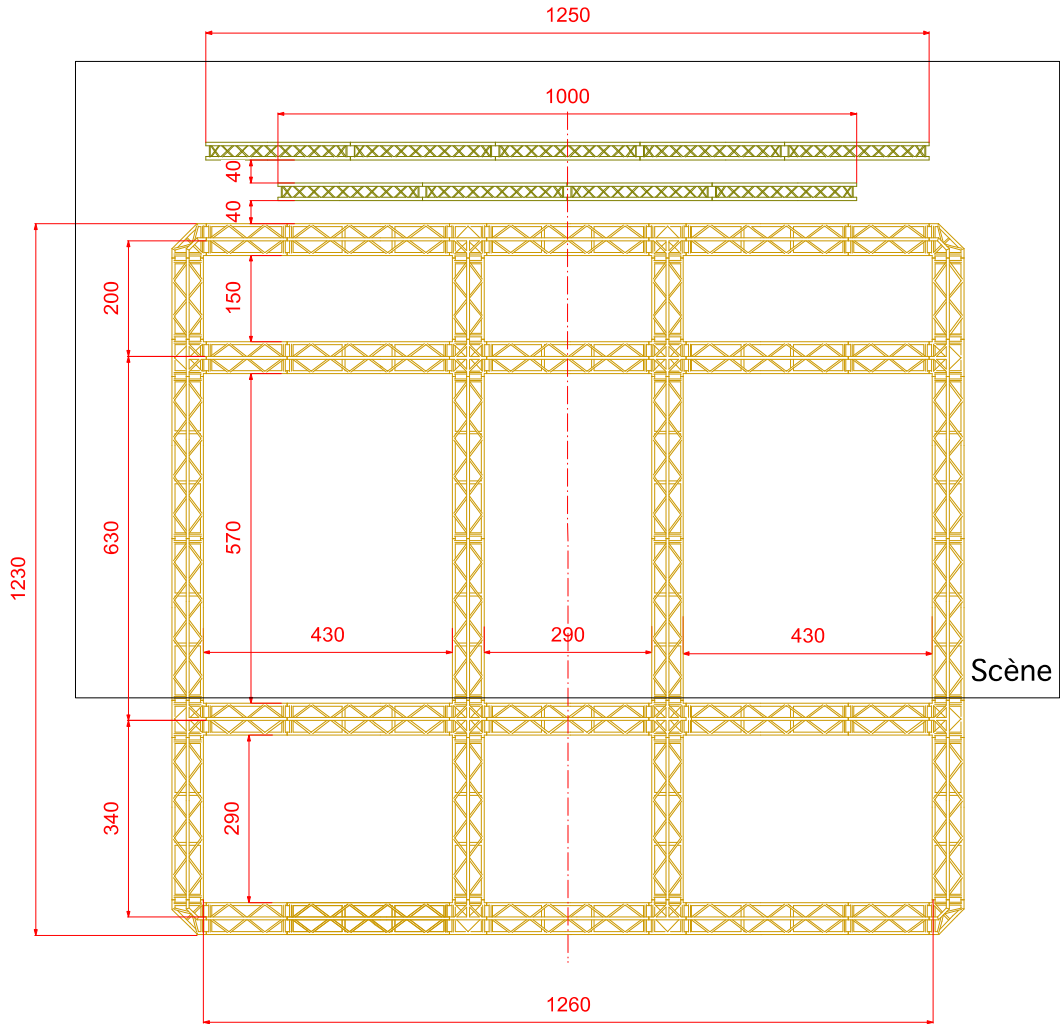
VENUE PLOT

Unit: meter

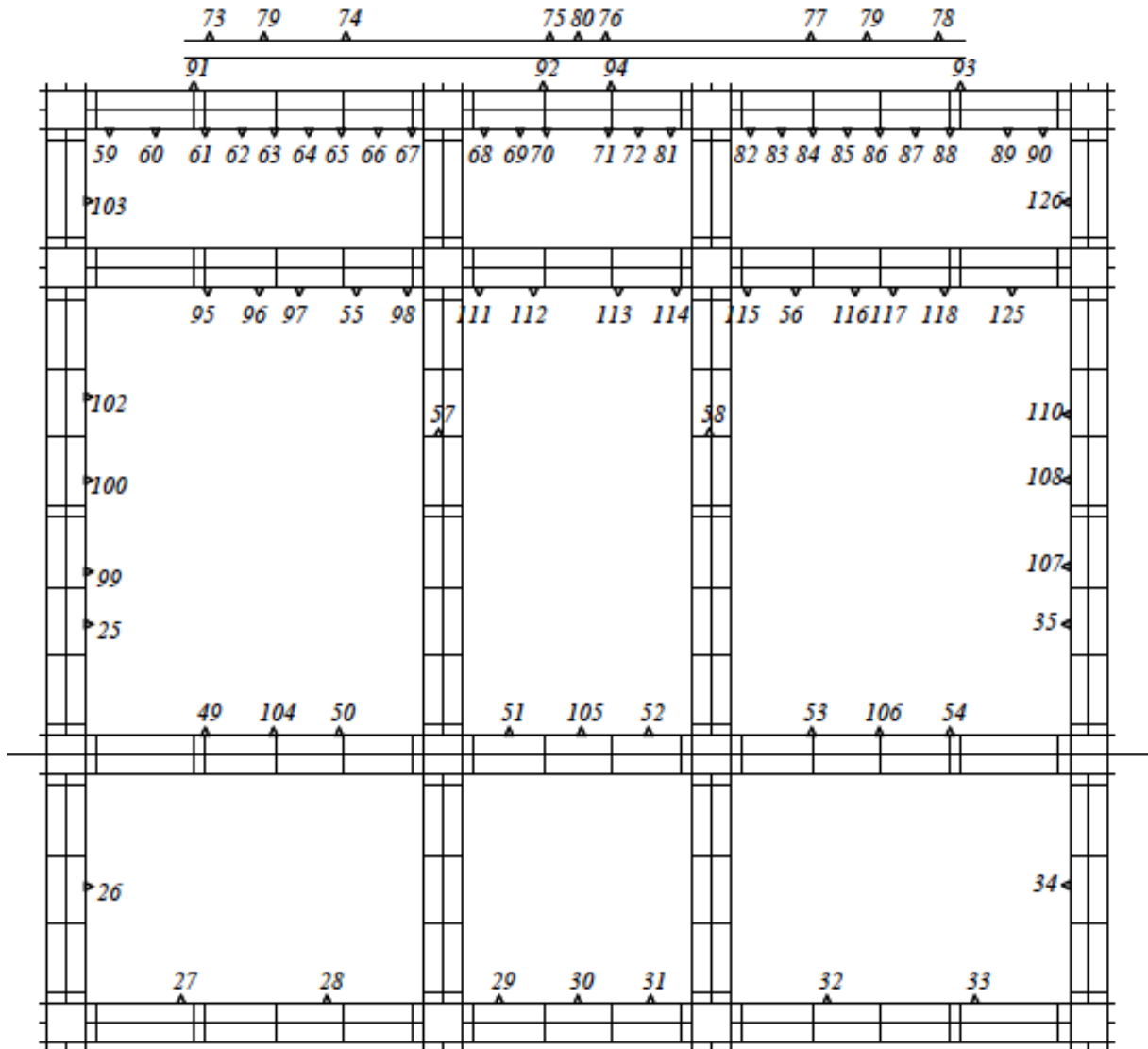


VENUE GRILL PLOT

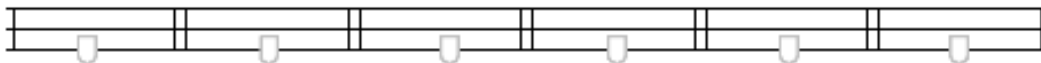
Unit : centimeter



VENUE LIGHT CHANNELS PLOT



Salle : 40 / 41 / 43 / 46 / 124



CLUB

Theater

- Club dimension: 14,9 m long x 12,75 m wide x 6 m high (see plot on p 7)
- Max capacity: 351 standing places or 148 seats

Stage

- Stage dimension : 12,75 m wide x 5 m long x 1 m high
- Screen available at upstage center – 6 m wide
- Marleys available to cover up the stage
- Ramp access upstage right
- 1 truss in front of the stage and a 50cm square network of poles on the stage walls and ceiling

FOH

- MIDAS PRO2 Digital desk + DL251 48 in/16out preamps (
- 1 Laptop provided with R1 (software for remote control of d&b FOH system)
- dualcore RJ45 cat5 + analogic multicore + splitter 48 in + 24 out
- 1 Tascam CD-RW 2000 writer

FOH Sound System

- 2 d&b Qi10 cabinets
- 4 d&b QiSUB cabinets
- 2 d&b D12 amps
- 1 DATEQ SPL5 limiter (**french max in house level admitted = 105 dB**)

Monitors

- 6 d&b MAX15 wedges
- 3 Crown CTS2000 amps

Sound Power +

- 1 X three-phase P17 32A socket upstage left

Light desk

- Grand Ma I Ultralight and Ma Lighting Lightcommander 24/48
- 10 ADB MEMOPACK 6 x 3kw mobiles dimmers

Lights

- 6 Martin rush m1 light (leds moving lights)
- 4 Martin rush (leds rgbw lights)
- 24 black PAR64 (CP60/61/62) 1kw
- 2 pairs of ACL bars, also individually usable
- 8 ADB A59Z 650w profiles
- 8 ADB C101 1000w PC
- 1 ATOMIC 3000 DMX Martin stroboscope
- 1 Unique Look 2.1hazer

Light Power +

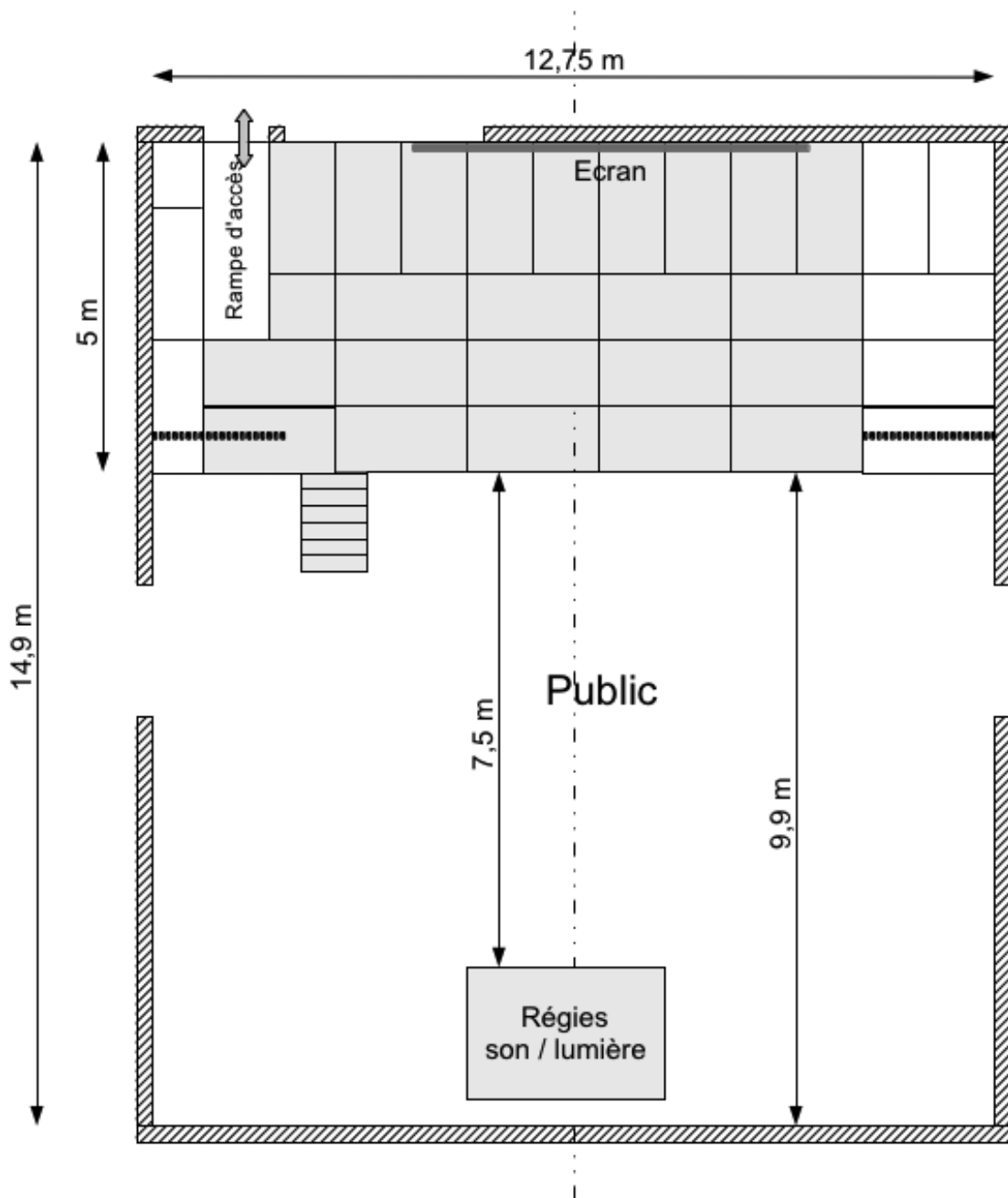
- 2 three-phase P17 32A sockets available

IMPORTANT NOTES :

- **The only decoration sets (backdrops included) granted on L'Autre Canal stages must be classified B-s2, d0 in European Reaction to Fire Classification system or equivalent. You will be asked for documents that prove it.**
- **Any request for any other technical equipment not listed above will be charged.**

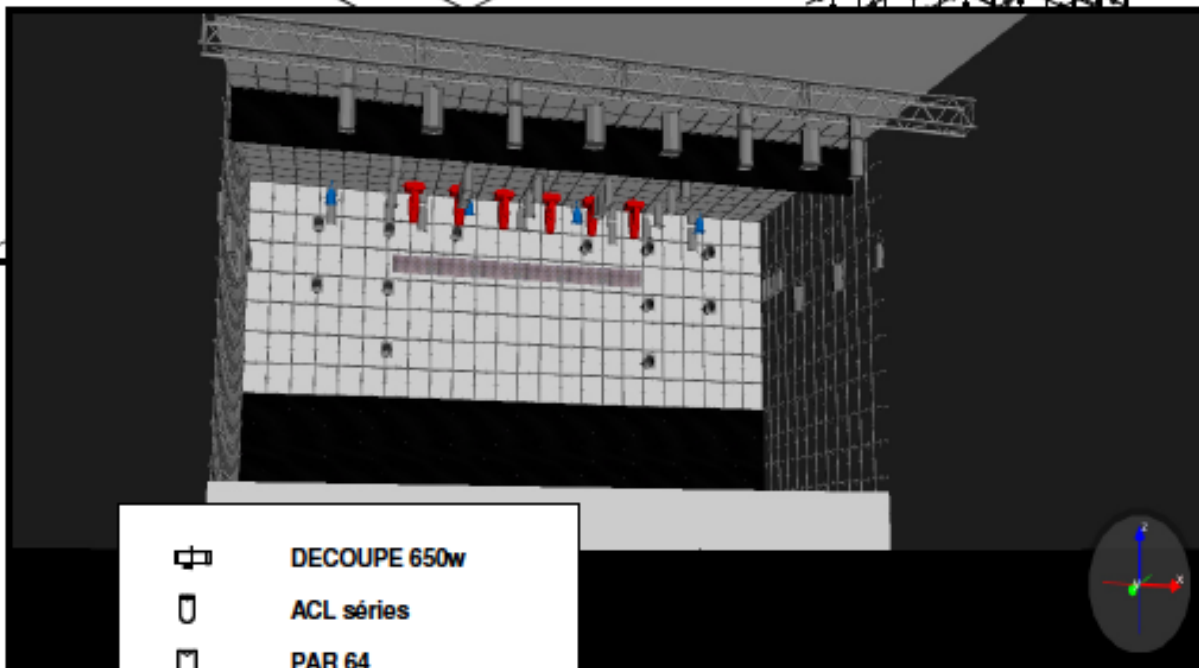
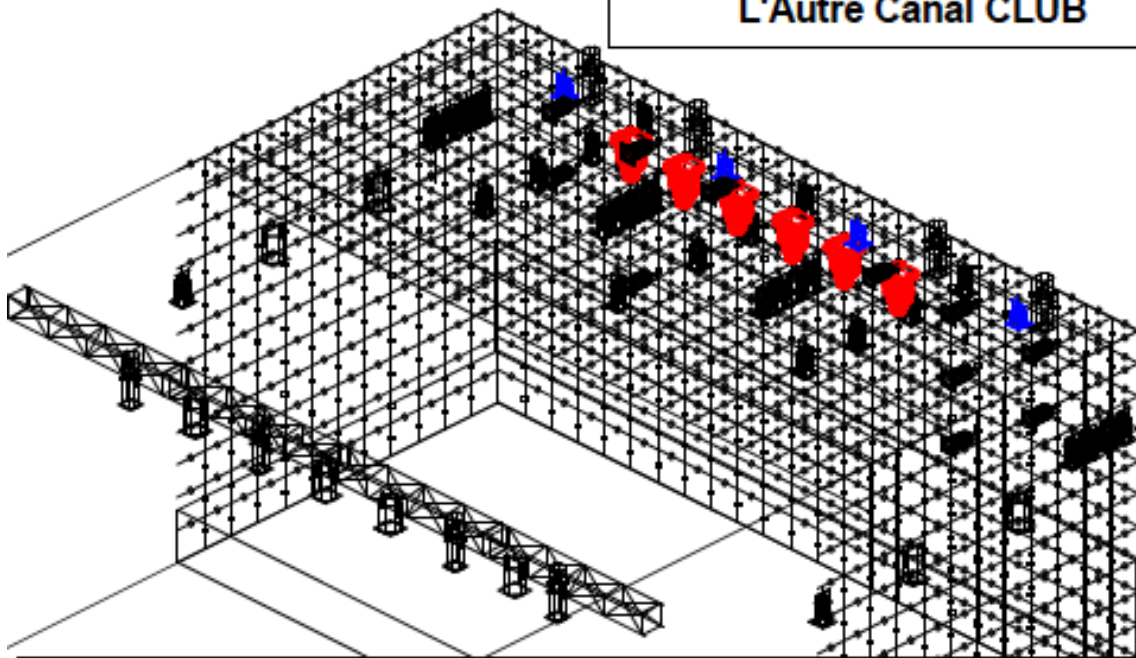
For sound and light items shared between the Big Venue and the Club, please see on p.12

CLUB PLOT



CLUB LIGHTING PLOT

L'Autre Canal CLUB

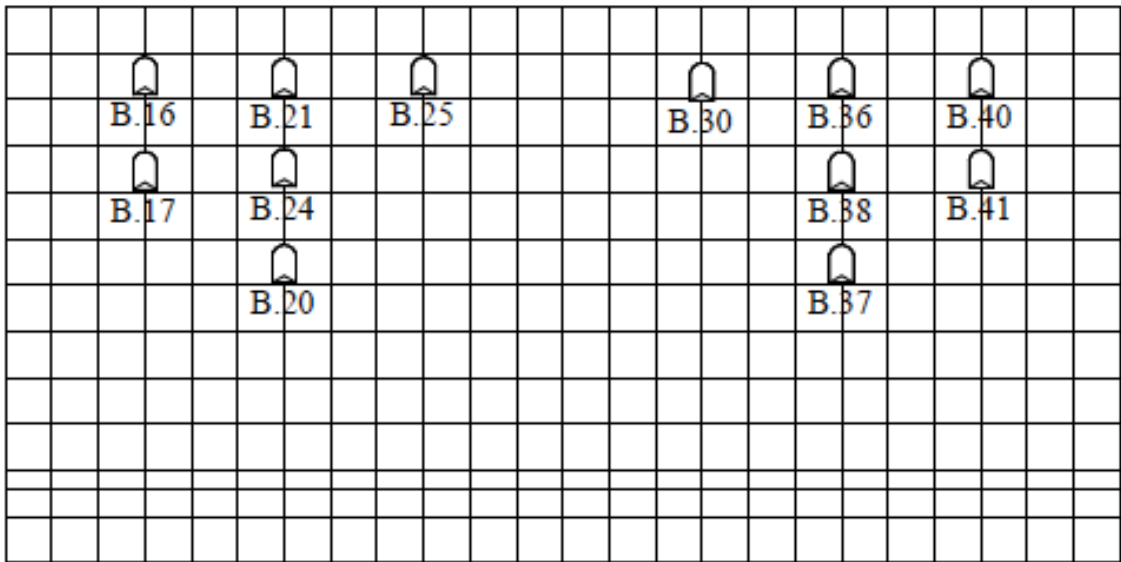


-  DECOUPE 650w
-  ACL séries
-  PAR 64
-  Mac Rush
-  PARLED Martin Rush RGB
-  ADB Europe C101 plan

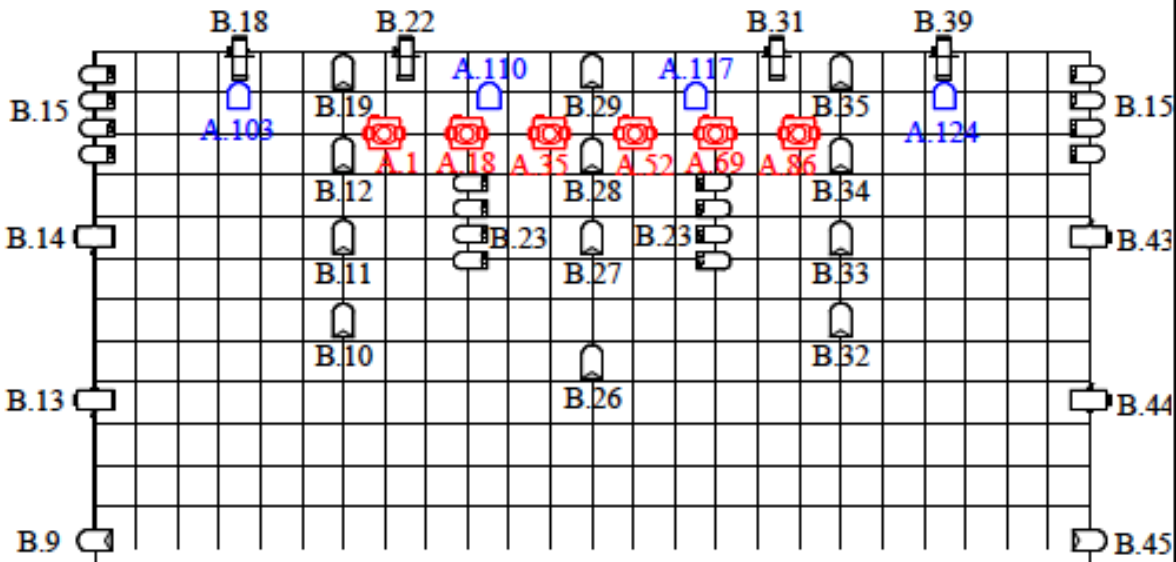
Consoles :

Grandma 1 Ultralight V.6.801

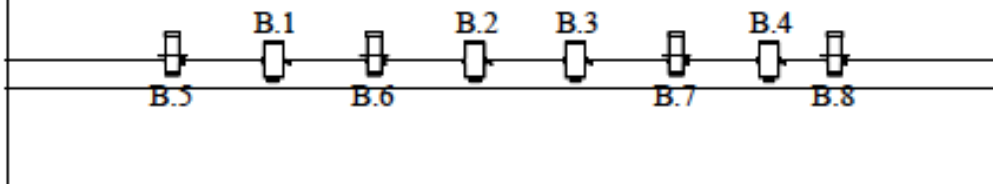
Lightcommander 24/48



Vue de face



Vue de dessus



ANNEXES

The availability of the equipments listed below depends on the Big Venue or the Club booking the day of your show.

SOUND ITEMS

Mics:

- 8 Shure SM58
- 4 Shure BETA58
- 2 Shure SLX2 BETA58 HF – récepteur SLX4
- 2 Shure ULX4 BETA58 HF – récepteur ULX4
- 11 Shure SM57
- 2 Shure BETA57
- 2 Shure BETA52
- 1 Shure BETA91
- 1 Beyerdynamic M201TG
- 1 Beyerdynamic M88
- 1 Audix OM7
- 1 Audix DP5 kit (1x i-5, 2x D2, 1x D4, 1x D6)
- 8 Sennheiser E604
- 2 Sennheiser E 906, 2 X E609, 2 X E606,
- 2 AKG C414BXLS
- 4 Shure SM81
- 4 AKG SE300 (CK91 or CK92 capsules)
- 6 AKG C535EB
- 14 DI BSS AR133

+ On request and if there's no rec session the day of your show : 2 AT4040 / 2 KM184

Additional monitors:

- 2 Nexo LS1200 subs PS serie (for drumfills or bass on sides)
- 2 QSC PLX 3002 amps with Nexo processor

Intercom:

- 2 Clearcom KB211GM (centrals)
- 8 Clearcom RS601 (belt sets)
- 8 Beyer DT108 headphones (1ear phone)

Mic stands:

- 25 short boom K&M 259BK
- 50 standard boom K&M 210/9BK
- 5 K&M 260/1BK on round bases
- 10 HP type K&M214/6
- 4 K&M table speech
- 1 small round base stand

Kits of various wires, multicores, splitters, etc.

LIGHT ITEMS

LEE Filters for 08 sources MAXIMUM:

- C.T. : 197 / 200 / 201 / 202 / 203 / 204 / 205
- yellow/amber : 020 / 100 / 101 / 134 / 147
- red : 019 / 026 / 027 / 106 / 182
- rose : 110 / 113
- blue : 079 / 117 / 119 / 132 / 143 / 144 / 165 / 202 / 353 / 725
- green : 090 / 115 / 124 / 131 / 139 / 219 / 327 / 383
- orange : 021 / 105 / 135 / 158
- violet : 058 / 126 / 332
- lavender : 052 / 058 / 142 / 180 / 343
- dark : HT 120 / HT 181 / HT 195 / HT 707
- pastel : 003 / 008 / 013 / 017 / 110 / 151 / 152 / 156 / 162

Dimmer :

- 1 ADB Memopack 12 X 3KW

Light stands:

- 10 ASD AL250 Light stands (max load 70 kg / max height 2,50 m)

VIDEO ITEMS

- 1 PANASONIC PT-EW730E beamer– 7000 lumens WXGA contrast 5000:1, zoom 1.7 X 2.8
- 1 SANYO PLC-XP57 beamer– 5500 lumens wide angle zoom 1.3 x 1.8 LNS W-31A
- 4 screens on stands – 4 m wide X 3 m high

PLUS

Risers:

- 10 Samia 1m x 2m risers and 10 rolling frames

Backline:

- 1 complète Pearl Export ELX Standard 825 drum kit (toms 12" -13"-16", cc 14", gc 22")
- 1 cymbal kit (Zildjian AVEDIS hh 14", Zildjian A Custom crash 16", medium ride 20" / Zildjian AVEDIS crash crash 18")
- 3 boom stands
- 1 Pearl Hi-Hat & 1 Pearl kick pedal
- 1 bass amp AMPEG SVT including a 8x10" cabinet & one SVT VR head
- 1 guitar amp Fender Twin 68 reissue
- 5 guitar stands
- 5 key stands
- 4 music stands

DJ kit:

- 2 Pioneer mixers (1 X DJM 600 & 1X DJM 800)
- 1 Allen&Heat XONE 92 mixer
- 1 Vestax PMC05 PRO3 mixer
- 4 Pioneer CD player (2 X CDJ 800 MKII et 2 X CDJ 1000 MK3)
- 4 Technics turn tables (2 X SL1210 MK5 et 2 X SL1200 MK2)
- 4 Cell kits (2 X Ortofon and 2 X Ortofon-Serato)